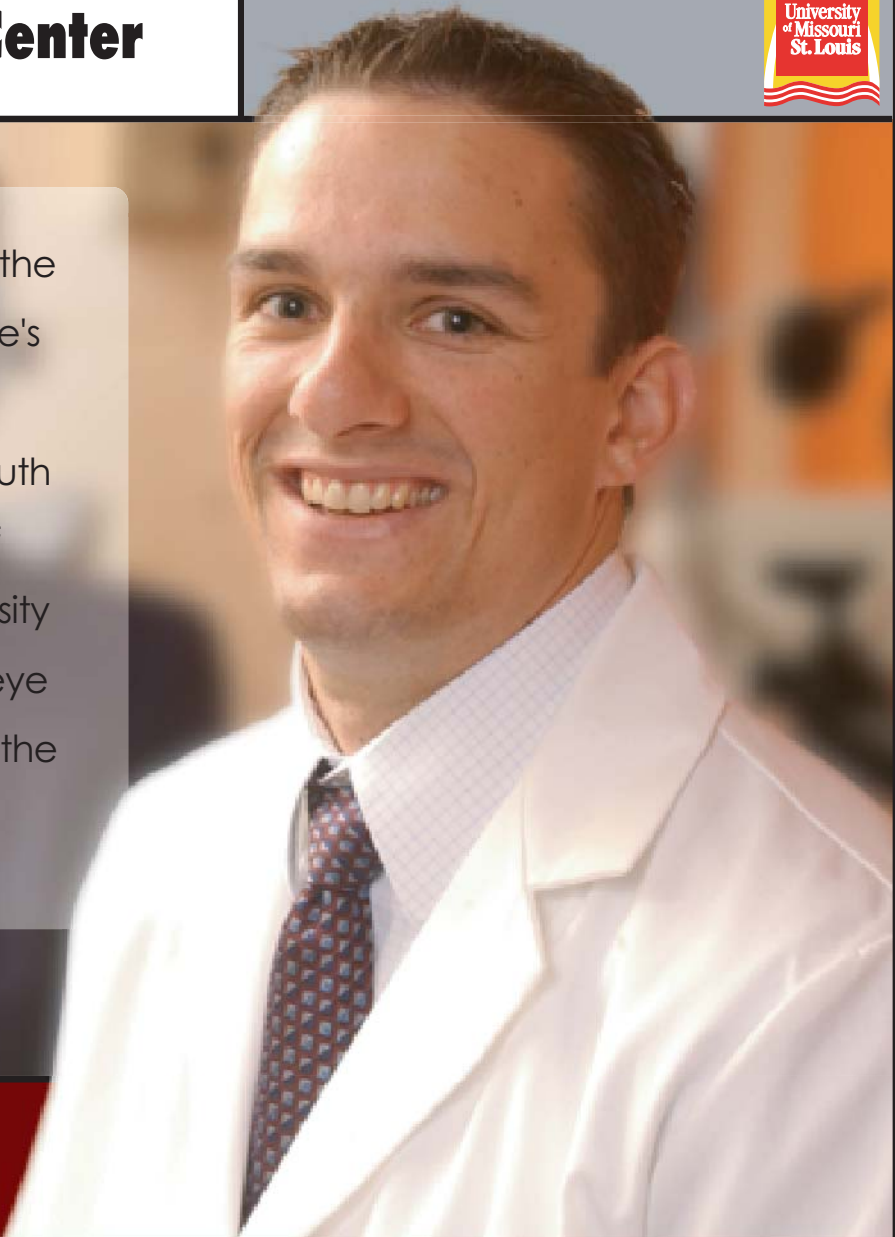


The University Eye Center is the flagship clinic of the College's Center for Eye Care. The center is located on the South Campus of the University of Missouri-St. Louis. The University Eye Center is a full service eye care facility and is open to the public.

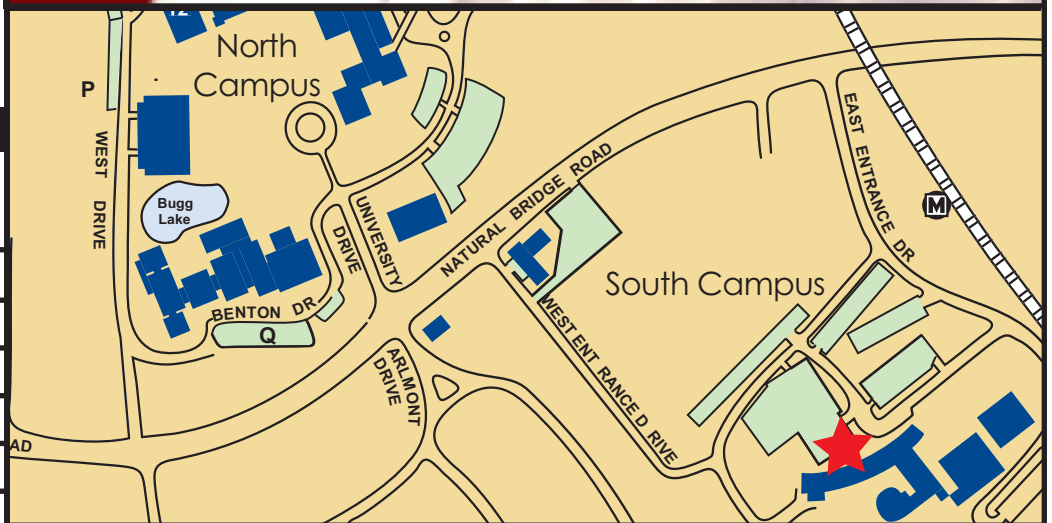


HOURS OF OPERATION

Monday & Wednesday
8:30 a.m.— 8 p.m.
Tuesday & Thursday
8:30 a.m. — 4:30 p.m.
Friday
8:30 a.m. — 12:30 p.m.

SERVICES OFFERED

+	Adult Comprehensive Eye Examinations
+	Pediatrics/Vision Training
+	Contact Lenses
+	Eye Health Management
+	Retinal Photography
+	Low Vision Rehabilitation
+	Corneal Topography
+	Retinal Photography
+	Electrodiagnosis



(314) 516-5131

1st Floor of Marillac Hall
7800 Natural Bridge Rd.